

**CONFIDENTIAL**



**UNIVERSITI TUN HUSSEIN ONN MALAYSIA**

**FINAL EXAMINATION  
SEMESTER II  
SESSION 2013/2014**

COURSE NAME : CIRCUIT THEORY

COURSE CODE : DAE 11103

PROGRAMME : 1 DAE

EXAMINATION DATE : JUNE 2014

DURATION : 3 HOURS

INSTRUCTION : PART A

ANSWER ALL QUESTIONS

PART B

ANSWER TWO (2) QUESTIONS  
ONLY

THIS QUESTION PAPER CONSISTS OF TEN (10) PAGES

**CONFIDENTIAL**

**PART A**

- Q1** (a) A telephone wire has a current of  $20 \mu\text{A}$  flowing through it. How long does it take for a charge of  $15 \text{ C}$  to pass through the wire?  
(5 marks)
- (b) Find current  $I$ , in the circuit of Figure Q1(b).  
(10 marks)
- (c) A  $30 \text{ W}$  incandescent lamp is connected to a  $120 \text{ V}$  source and is left burning continuously in an otherwise dark staircase. Determine the current through the lamp and the energy of operating the light for a year in kWh.  
(5 marks)
- Q2** (a) By using nodal analysis, find  $V_o$  and the power dissipated in the  $1 \Omega$  resistor in the circuit of Figure Q2(a).  
(10 marks)
- (b) For the bridge network in Figure Q2(b), find  $i_o$  using mesh analysis.  
(10 marks)
- Q3** (a) Apply Thevenin's theorem to determine  $V_o$  in the circuit of Figure Q3(a) and sketch the Thevenin's equivalent circuit with related values.  
(10 marks)
- (b) Find the Norton equivalent with respect to terminals  $a$ - $b$  in the circuit shown in Figure Q3(b).  
(10 marks)

**PART B**

**Q4** (a) For the circuit in Figure Q4(a), determine the voltage and energy stored in each capacitor.

(8 marks)

(b) The voltage across a 200-mH inductor is given by;

$$v(t) = 3t^2 + 2t + 4 \text{ V for } t > 0.$$

Determine the current  $i(t)$  through the inductor. Assume that  $i(0) = 1 \text{ A}$ .

(6 marks)

(c) Under steady-state dc conditions (the inductor acts like a short circuit, while the capacitor acts like an open circuit), find  $i$  and  $v$  in the circuit in Figure Q4(c).

(6 marks)

**Q5** (a) For the circuit in Figure Q5(a);

$$v = 120e^{-50t} \text{ V and } i = 30e^{-50t} \text{ A, } t > 0$$

(i) Find  $L$  and  $R$ .

(4 marks)

(ii) Determine the time constant.

(2 marks)

(iii) Calculate the initial energy in the inductor.

(2 marks)

(iv) What fraction of the initial energy is dissipated in 10 ms?

(2 marks)

(b) The switch in Figure Q5(b) has been in position  $a$  for a long time. At  $t = 0$  it moves to position  $b$ . Calculate  $i(t)$  for all  $t > 0$ .

(10 marks)

- Q6** (a) Find the amplitude, phase, period, and frequency of the sinusoid.

$$v(t) = 12 \cos(50t + 10^\circ)$$

(5 marks)

- (b) Let  $\mathbf{X} = 8 \angle 40^\circ$  and  $\mathbf{Y} = 10 \angle -30^\circ$ . Evaluate the following quantities and express your results in polar form.

(i)  $(\mathbf{X} + \mathbf{Y})\mathbf{X}^*$  (2½ marks)

(ii)  $(\mathbf{X} - \mathbf{Y})^*$  (2½ marks)

- (c) What is the instantaneous voltage across a 2  $\mu\text{F}$  capacitor when the current through it is;

$$i = 4 \sin(10^6 t + 25^\circ) \text{ A}$$

(5 marks)

- (d) Determine  $\mathbf{Z}_T$  and  $\mathbf{I}$  in the circuit of Figure Q6(d).

(5 marks)

- Q7** (a) For the entire circuit in Figure Q7(a), calculate:

(i) The power factor (4 marks)

(ii) The average power delivered by the source (2 marks)

(iii) The reactive power (2 marks)

(iv) The apparent power (2 marks)

(v) The complex power (2 marks)

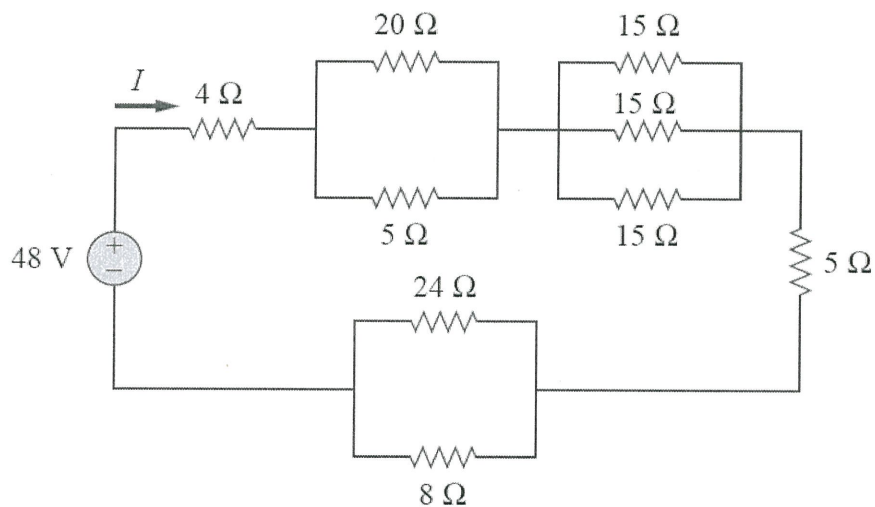
- (b) An 880-VA, 220-V, 50-Hz load has a power factor of 0.8 lagging. What value of parallel capacitance will correct the load power factor to unity? (8 marks)

**- END OF QUESTION -**

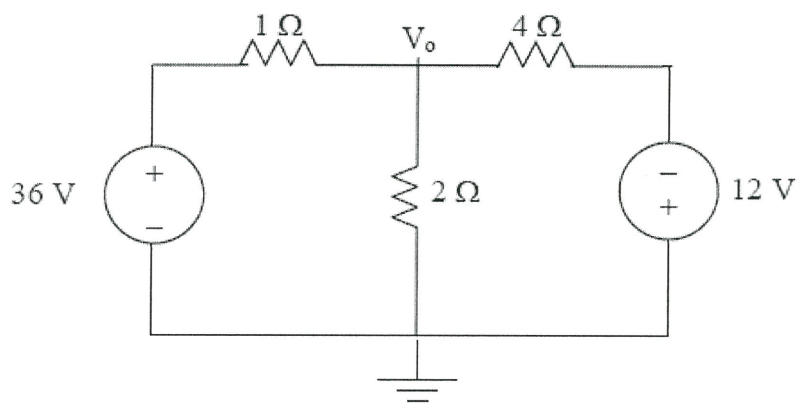
**FINAL EXAMINATION**

SEMESTER/SESSION: SEM II/2013/2014  
 COURSE NAME : CIRCUIT THEORY

PROGRAMME : 1 DAE  
 COURSE CODE : DAE 11103



**FIGURE Q1(b)**

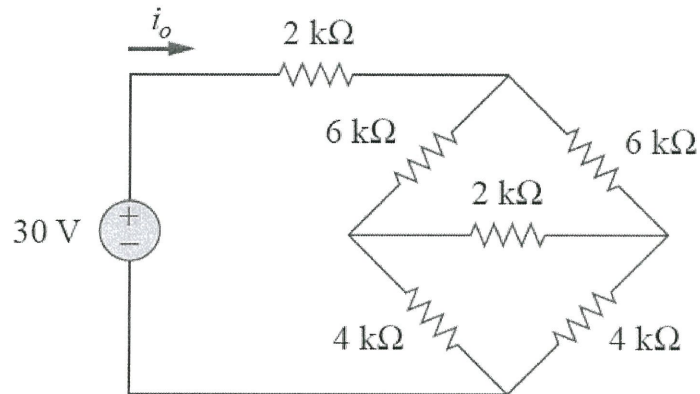


**FIGURE Q2(a)**

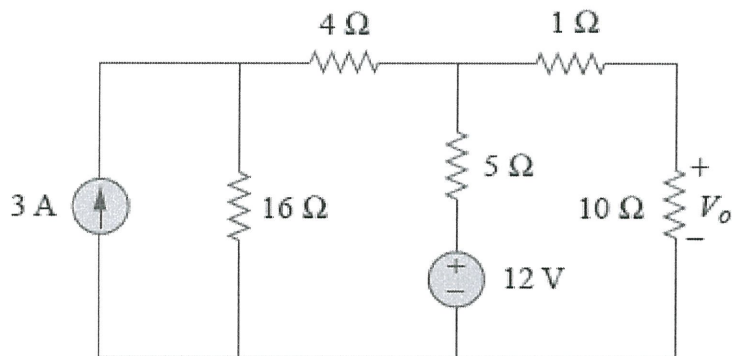
**FINAL EXAMINATION**

SEMESTER/SESSION: SEM II/2013/2014  
 COURSE NAME : CIRCUIT THEORY

PROGRAMME : 1 DAE  
 COURSE CODE : DAE 11103



**FIGURE Q2(b)**

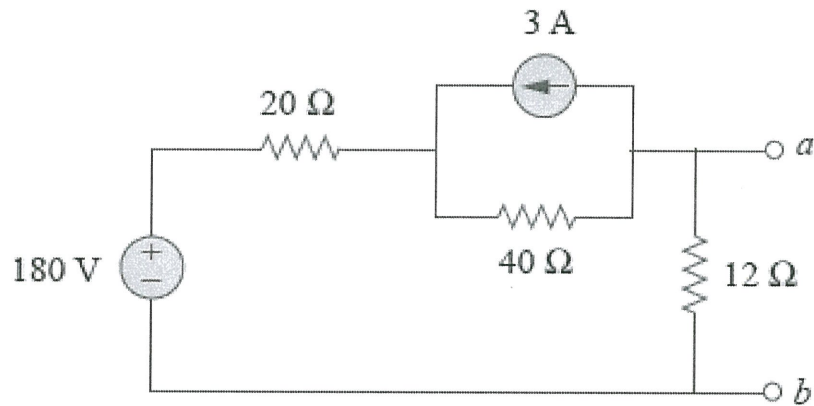


**FIGURE Q3(a)**

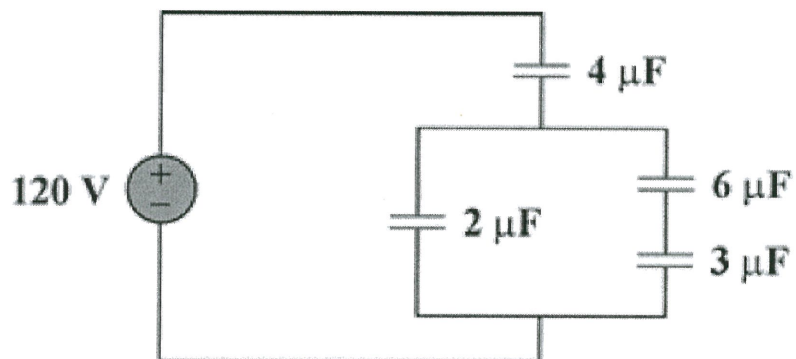
**FINAL EXAMINATION**

SEMESTER/SESSION: SEM II/2013/2014  
COURSE NAME : CIRCUIT THEORY

PROGRAMME : 1 DAE  
COURSE CODE : DAE 11103



**FIGURE Q3(b)**

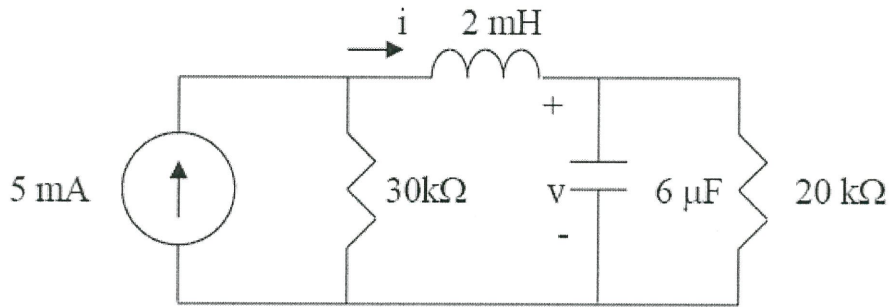


**FIGURE Q4(a)**

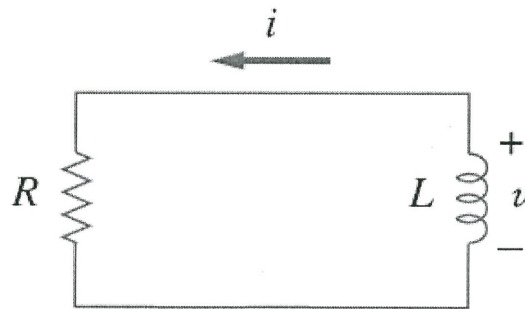
**FINAL EXAMINATION**

SEMESTER/SESSION: SEM II/2013/2014  
 COURSE NAME : CIRCUIT THEORY

PROGRAMME : 1 DAE  
 COURSE CODE : DAE 11103



**FIGURE Q4(c)**



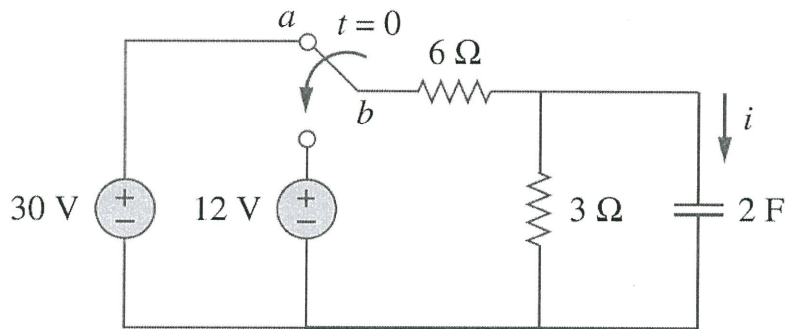
**FIGURE Q5(a)**



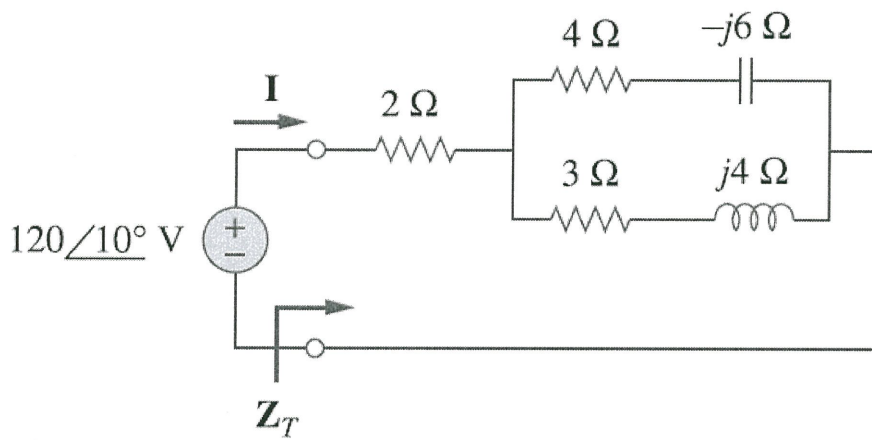
**FINAL EXAMINATION**

SEMESTER/SESSION: SEM II/2013/2014  
 COURSE NAME : CIRCUIT THEORY

PROGRAMME : 1 DAE  
 COURSE CODE : DAE 11103



**FIGURE Q5(b)**

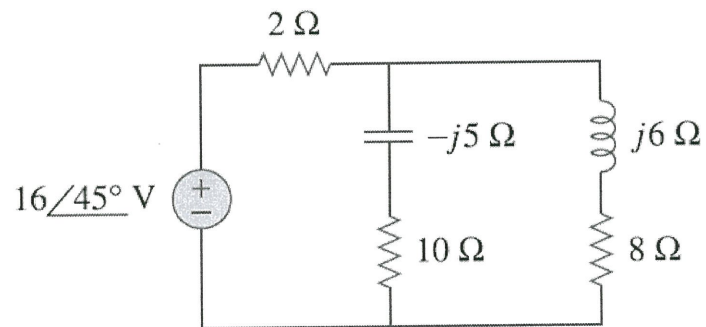


**FIGURE Q6(d)**

**FINAL EXAMINATION**

SEMESTER/SESSION: SEM II/2013/2014  
COURSE NAME : CIRCUIT THEORY

PROGRAMME : 1 DAE  
COURSE CODE : DAE 11103



**FIGURE Q7(a)**