



UNIVERSITI TUN HUSSEIN ONN MALAYSIA

**FINAL EXAMINATION
SEMESTER II
SESSION 2017/2018**

COURSE NAME : ERGONOMICS &
ANTHROPOMETRIC

COURSE CODE : BPP 10202

PROGRAMME CODE : BPP

EXAMINATION DATE : JUNE / JULY 2018

DURATION : 2 HOURS

INSTRUCTION : ANSWER ALL QUESTIONS



THIS QUESTION PAPER CONSISTS OF **THREE (3) PAGES**

- Q1**
- (a) Define Ergonomics. (3 marks)
 - (b) State **TWO (2)** aims of Ergonomics. (2 marks)
 - (c) Define Anthropometrics. (3 marks)
 - (d) Explain Human Operator in Ergonomic. (5 marks)

- Q2** (a) Creating a suitable computer workstation is important. **Figure Q2** shows an appropriate computer workstation.

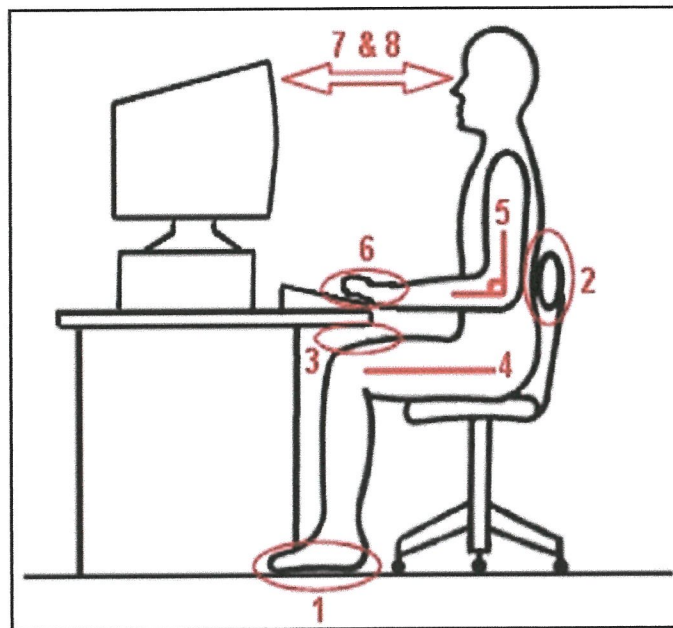


Figure Q2: Computer workstation.

- (i) Explain each position as numbered in the **Figure Q2**. (16 marks)
 - (ii) List **FIVE (5)** potential injuries that could occur due to long-term use of computer. (5 marks)
- (b) Discuss **FOUR (4)** benefits of ergonomics to worker. (8 marks)

TERBUKA

Q3 The workstation consists of a table with a fixed height and an adjustable chair with an adjustable foot rest.

- (a) Explain **FIVE (5)** important design features of chair and table. (10 marks)
- (b) Illustrate an ergonomics height of an office desk with labels. (8 marks)
- (c) Discuss the ergonomic needs in a workplace. (10 marks)

Q4 (a) Discuss **FIVE (5)** tools of anthropometric data for designing a garden chair. (10 marks)

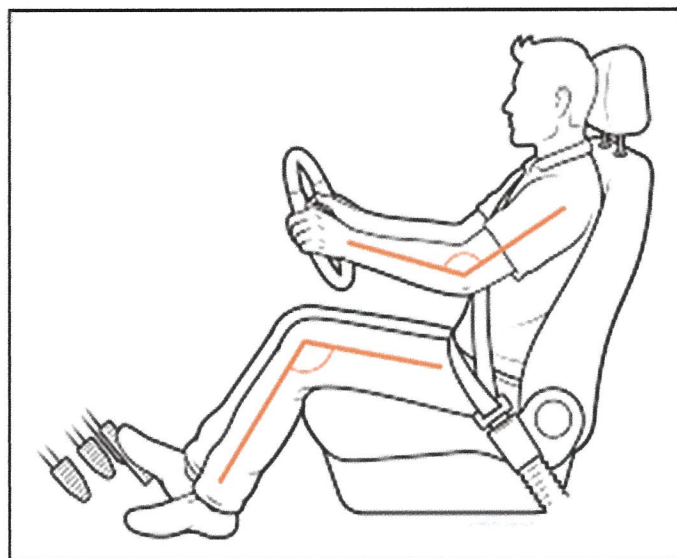


Figure Q4: Human machine interaction

- (b) According to **Figure Q4**,
 - (i) Explain **FOUR (4)** interfaces between human and machine. (10 marks)
 - (ii) Differentiate **FIVE (5)** posture conditions between male and female drivers. (10 marks)

TERBUKA

- END OF QUESTIONS -