

CONFIDENTIAL



UNIVERSITI TUN HUSSEIN ONN MALAYSIA

**FINAL EXAMINATION
SEMESTER I
SESSION 2021/2022**

COURSE NAME : COMPUTER SYSTEM AND NETWORK
COURSE CODE : BBU 30403
PROGRAMME CODE : BBF
EXAMINATION DATE : JANUARY/FEBRUARY 2022
DURATION : 3 HOURS
INSTRUCTION : 1. ANSWER **ALL** QUESTIONS
2. THIS FINAL EXAMINATION IS AN **ONLINE** ASSESSMENT AND CONDUCTED VIA **CLOSED BOOK**

THIS EXAMINATION PAPER CONSISTS OF **THREE (3)** PAGES

CONFIDENTIAL

TERBUKA

- Q1** (a) Give the definition of mobile computer. (2 marks)
- (b) List three (3) types of mobile devices. (3 marks)
- (c) A self-service kiosk is a freestanding terminal that usually has a touch screen for user interaction. Discuss the types and services provided by self-service kiosks. (10 marks)
- (d) Explain the difference between fourth-generation computer and fifth-generation computer. (10 marks)
- Q2** (a) What is a motherboard? (2 marks)
- (b) State three (3) components of system unit. (3 marks)
- (c) Explain the steps in a Machine Cycle using diagrams. (10 marks)
- (c) Discuss the types of main memory chip on the motherboard and the differences between Random Access Memory (RAM) and Read Only Memory (ROM). (10 marks)
- Q3** (a) What is network topology? (3 marks)
- (b) Explain three (3) types of network. (6 marks)
- (c) Based on **Figure Q3(c)**, discuss the types of transmission media, network topology and network devices used in the network.

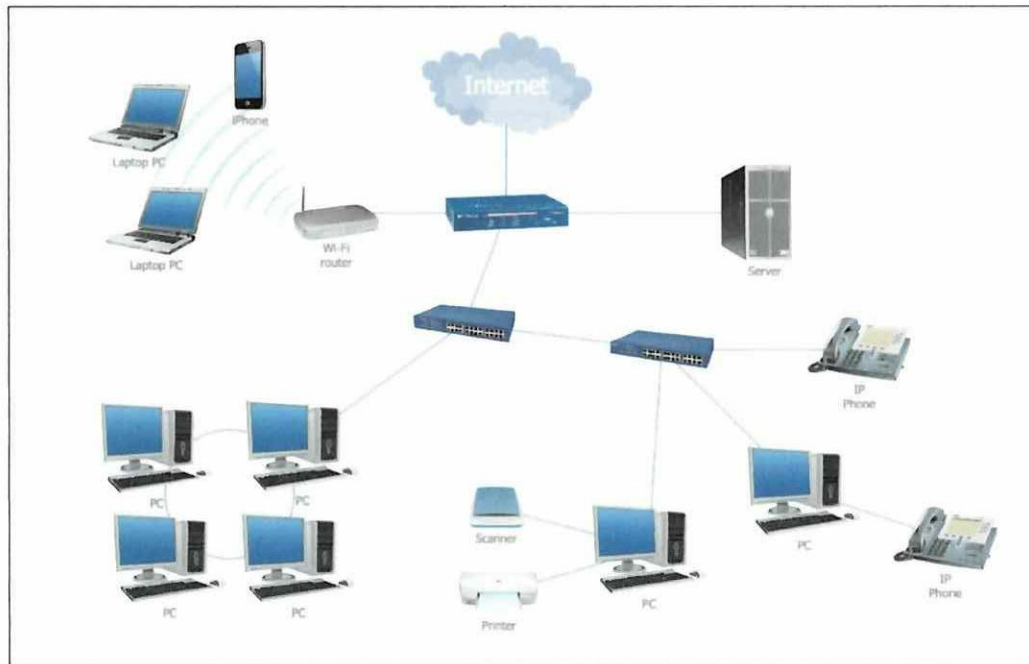


Figure Q3(c)

(16 marks)

- Q4**
- (a) What is TCIP/IP? (2 marks)
 - (b) Draw and state the function of each layer in the Open Systems Interconnection (OSI) Model. (10 marks)
 - (c) An organization consisting of four (4) departments. Each department has 60 employees, design a network layout using IP Address in Class C for the IP Address allocation. (13 marks)

-END OF QUESTIONS-

