



**UNIVERSITI TUN HUSSEIN ONN MALAYSIA**

**FINAL EXAMINATION  
SEMESTER II  
SESSION 2022/2023**

COURSE NAME : STATICS  
COURSE CODE : DAM 13403  
PROGRAMME CODE : DAM  
EXAMINATION DATE : JULY / AUGUST 2023  
DURATION : 3 HOURS  
INSTRUCTION : 1. ANSWERS **FIVE (5)** QUESTIONS  
**ONLY.**

2. THIS FINAL EXAMINATION IS  
CONDUCTED VIA **CLOSED BOOK.**

3. STUDENTS ARE **PROHIBITED** TO  
CONSULT THEIR OWN MATERIAL  
OR ANY EXTERNAL RESOURCES  
DURING THE EXAMINATION  
CONDUCTED VIA CLOSED BOOK

THIS QUESTION PAPER CONSISTS OF **SEVEN (7)** PAGES

- Q1** Three forces act on the bracket shown in **Figure Q1**.
- (a) Determine the magnitude of the resultant force acting on the bracket and its direction measured counterclockwise from the positive  $x'$  axis if  $F_1 = 300$  N and  $\theta = 10^\circ$ .  
(8 marks)
- (b) If the magnitude of the resultant force acting on the bracket is to be 800 N directed along the positive  $x'$  axis, determine the magnitude of  $F_1$  and its direction  $\theta$ .  
(12 marks)
- Q2** Three forces act on the bracket shown in **Figure Q2**.
- (a) Explain the resultant moments of a system of coplanar forces.  
(2 marks)
- (b) Determine the resultant moment of the forces about point A. Take  $F_1=250$  N,  $F_2=300$  N and  $F_3=500$  N.  
(8 marks)
- (c) If the resultant moment of point A is 4800 Nm clockwise, determine the magnitude of  $F_3$  if  $F_1=300$  N and  $F_2=400$  N.  
(10 marks)
- Q3** The 35 kg pipe is supported at A by a system of five cords as shown in **Figure Q3**.
- (a) Explain the condition for the equilibrium of a particle.  
(2 marks)
- (b) Draw the free body diagram (FBD) for the structure of the ring at A and B.  
(4 marks)
- (c) Determine the force in each cord of AE, AB, BD and BC for equilibrium.  
(14 marks)
- Q4** **Figure Q4** shows the part of an airplane's internal structure.
- (a) Draw a free body diagram (FBD) of the truss.  
(3 marks)
- (b) Determine the magnitude of the reaction forces at supports B and F.  
(7 marks)
- (c) Using the method of section, determine the forces in members BC, BD, and BE of the truss.  
(10 marks)

- Q5**
- (a) Define the Center of Gravity. (2 marks)
  - (b) Briefly explain in which condition Centroid coincides with the Center of Gravity. (3 marks)
  - (c) Determine the area and centroid of the shaded area in **Figure Q5(c)**. (7 marks)
  - (d) **Figure Q5(d)** shows a piece of composite plate, determine the centroid of the plate. (8 marks)
- Q6** **Figure Q6** shows three blocks, A, B and C with weights  $W_B = 20$  N and  $W_C = 80$  N. Surface between A and B,  $\mu_s = 0.2$  and between B and C,  $\mu_s = 0.18$ . Between C and the wall  $\mu_s = 0.3$
- (a) Draw a free body diagram (FBD) of the wedges. (5 marks)
  - (b) Determine the normal force between AB and BC. (10 marks)
  - (c) Determine the magnitude of force, F needed to start moving block C upward. (5 marks)

-END OF QUESTIONS -

FINAL EXAMINATION

SEMESTER / SESSION : SEM 2 2022/2023  
COURSE NAME : STATICS

PROGRAMME CODE: DAM  
COURSE CODE : DAM13403

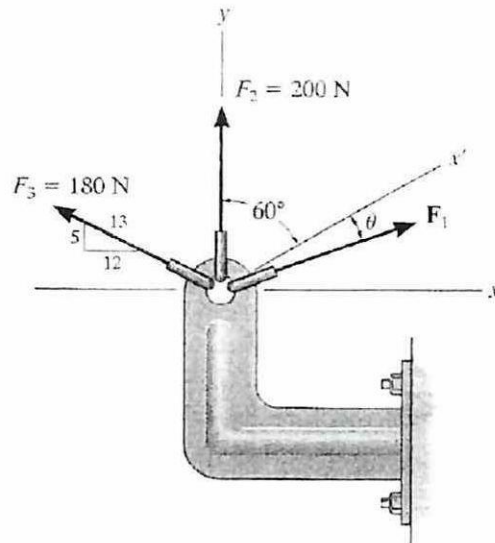


Figure Q1

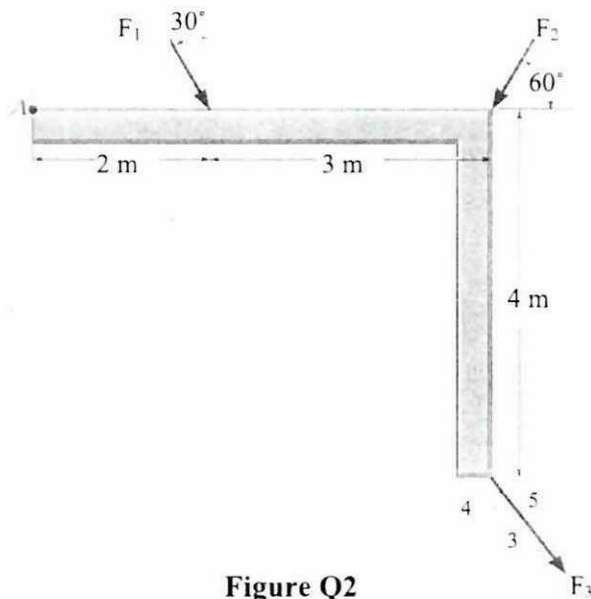


Figure Q2

FINAL EXAMINATION

SEMESTER / SESSION : SEM 2 2022/2023  
COURSE NAME : STATICS

PROGRAMME CODE: DAM  
COURSE CODE : DAM13403

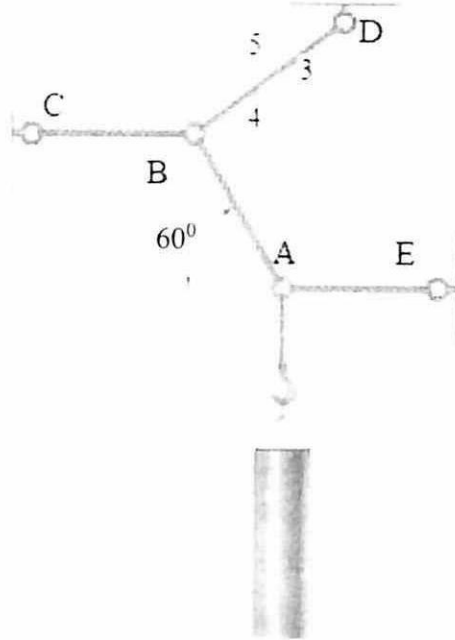


Figure Q3

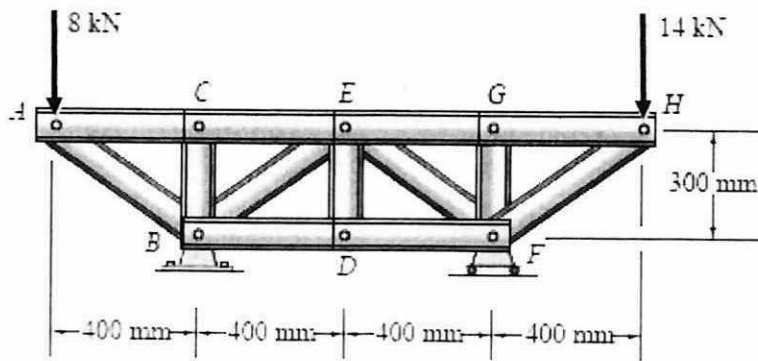


Figure Q4

FINAL EXAMINATION

SEMESTER / SESSION : SEM 2 2022/2023  
COURSE NAME : STATICS

PROGRAMME CODE: DAM  
COURSE CODE : DAM13403

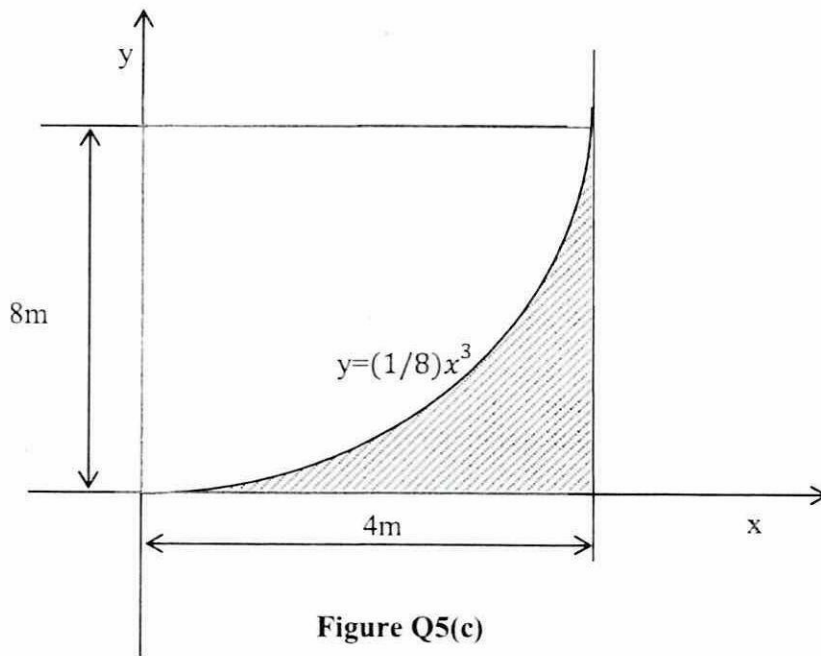


Figure Q5(c)

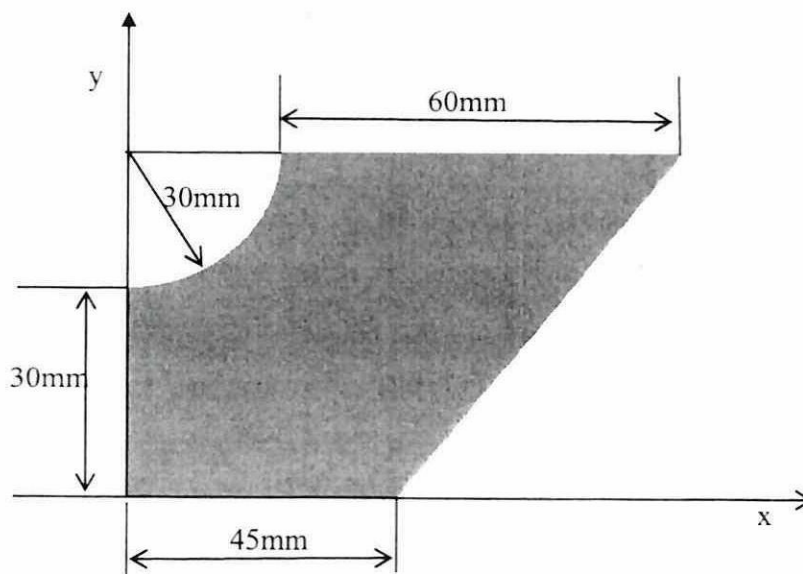


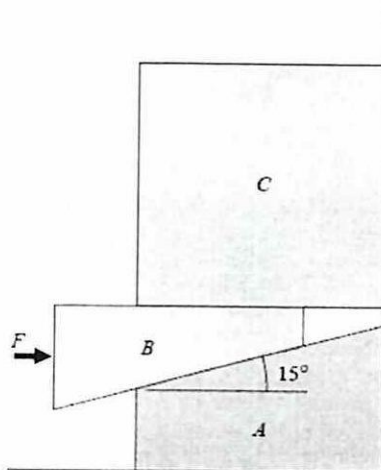
Figure Q5(d)

TERBUKA

**FINAL EXAMINATION**

SEMESTER / SESSION : SEM 2 2022/2023  
COURSE NAME : STATICS

PROGRAMME CODE: DAM  
COURSE CODE : DAM13403



**Figure Q6**