

CONFIDENTIAL



UNIVERSITI TUN HUSSEIN ONN MALAYSIA

**FINAL EXAMINATION
SEMESTER II
SESSION 2015/2016**

**COURSE NAME : SPECIAL TOPICS IN MULTIMEDIA
COMPUTING**

COURSE CODE : BIM 33603

PROGRAMME CODE : BIM

EXAMINATION DATE : JUNE / JULY 2016

DURATION : 2 HOURS AND 30 MINUTES

INSTRUCTION : ANSWER ALL QUESTIONS

THIS QUESTION PAPER CONSISTS OF FOUR (4) PAGES

CONFIDENTIAL

- Q1** (a) Describe about Multimedia Computing. (4 marks)
- (b) State **FOUR (4)** elements of multimedia computing. (4 marks)
- (c) Consider the following information:
- In multimedia, the basic carrier of meaning or symbols are not just traditional words as used in speech and text. Consider a visual information or visual dictionaries which are being developed for different applications and for different kinds of visual information, ranging from shapes of curves to complex objects.
- Sketch an example layout of a visual dictionary of any information. (4 marks)
- (d) Distinguish between perception and perceptual cycle. (4 marks)
- Q2** (a) Explain how metadata can expose our privacy through online social network. (4 marks)
- (b) State **FOUR (4)** security issues related to Online Social Network. (4 marks)
- (c) Consider the following scenario:
- Many Online Social Networks (OSNs) prohibit users from removing shared content, or they provide the facility with some obstacles (time frames, i.e. a photo will not be immediately removed, i.e. users have to pay to remove content, etc.).
- Write your prediction on the **THREE (3)** possible impacts of the attacks which might occurred based on the above scenario. (6 marks)
- (d) Discuss **TWO (2)** possible countermeasures on OSNs attacks. (8 marks)

- Q3 (a) List **THREE (3)** stages of document creation. (3 marks)
- (b) Illustrate a layout of a basic video authoring/editing environment. (10 marks)

Q4 Given the following **Figure Q4**:

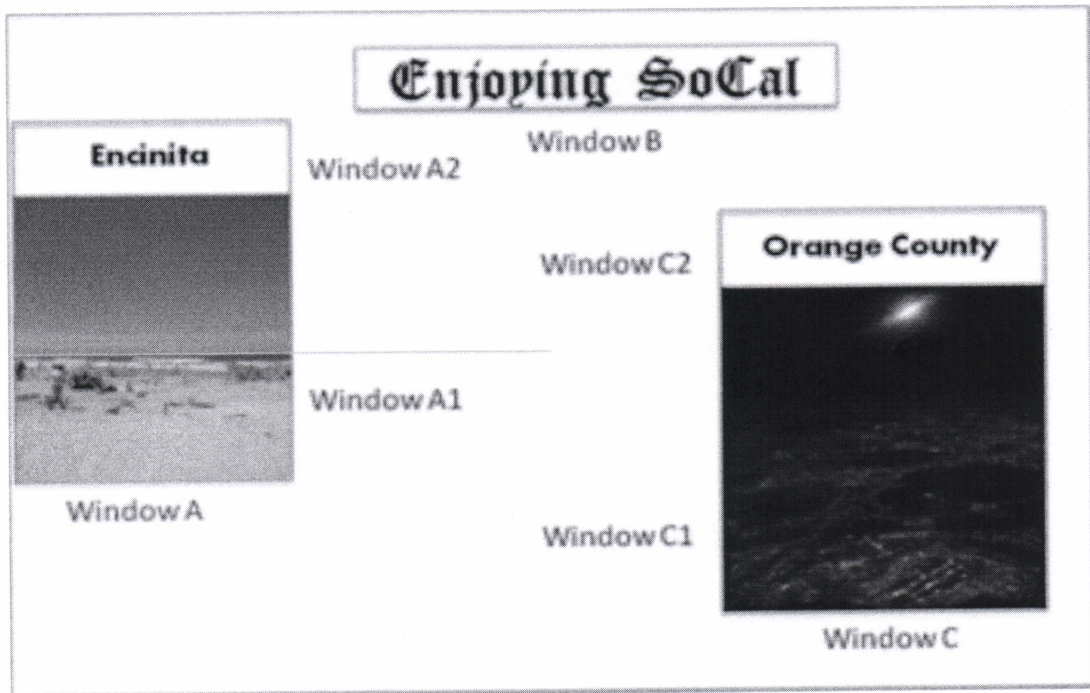


Figure Q4

- (a) Identify the type of layout for **Figure Q4**. (2 marks)
- (b) Sketch a tree structure that represents components depicted in **Figure Q4**. (8 marks)

Q5 (a) Explain what is responsiveness. (4 marks)

(b) Given the following **Figure Q5**:

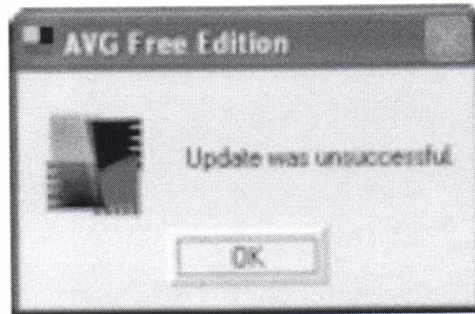


Figure Q5

Sketch an appropriate user interface design for the message delivered in **Figure Q5**. (5 marks)

Q6 Design **ONE (1)** serious game layout that shows a patient and doctor situation in an operation room. (10 marks)

-END OF QUESTION-